



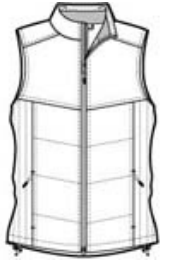
Keep the warmth centered on your core in our Puffy Vest. These styles are great for layering over a long sleeve shirt or under a jacket. Some feature a colorful lining.

- 100% polyester shell, 100% polyester lining with water-resistant finish, 6-ounce polyfill
- Zip-through cadet collar
- Reverse coil zipper
- Interior storm flap
- Interior zippered pocket
- Interior pocket with drawcord and toggle
- Front zippered pockets
- Port Pocket™ for easy embroidery access
- Open hem with drawcord and toggles for adjustability

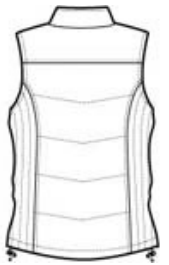
**CARE INSTRUCTIONS**

Machine wash cold with like colors. Use mild detergent. Do not bleach. Tumble dry low remove promptly. Cool iron if necessary. Do not dry clean.

[Tips For Effectively Screen Printing Polyester Fabrics](#)

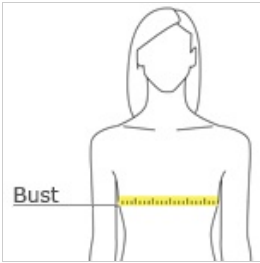


front



back

**HOW TO MEASURE**



**BUST**  
Measure under the arm and around the fullest part of the bust with arms down, keeping tape horizontal.

**SIZE CHART**

	S	M	XS	XXL	3XL	4XL	L	XL
Size	4/6	8/10	2	20/22	24/26	28/30	12/14	16/18
Bust	35-36	37-38	32-34	45-47	48-51	52-55	39-41	42-44

**COLOR INFORMATION**

Black/ Black PMS NTR BLACK C	Bright Berry/ Bermuda Purple PMS 242C	Dark Slate/ Black PMS 432C	Mediterranean Blue/ Black PMS 2118C	White/ Dark Slate